



Aerial Photo of Visitor Center (top left) & Parking Lot

PARKING

Vehicle access is restricted to the Visitor Center parking lot.

The entry gate into the park will shut at closing time. All visitors should plan on returning to the parking lot in time to vacate the park before closing time. For safety and security reasons, the parking lot access is restricted to the seasonal hours listed below.

- Fall: 7 a.m.—8 p.m. (Labor Day until switch to Pacific Standard Time)
- Winter: 7 a.m.—6 p.m. (until switch to Daylight Savings Time)
- Spring: 7 a.m.—8 p.m. (until Memorial Day)
- Summer: 7 a.m.—10 p.m. (Memorial Day to Labor Day)

RESOURCES

For additional information, visit www.portlandoregon.gov/water/powellbutte or contact Portland Water Bureau Public Information at 503-823-3028 or by e-mail at Lindsay.Wochnick@portlandoregon.gov.



PORTLAND WATER BUREAU

1120 SE 5th Avenue, Suite 600

Portland, OR 97204-1926

Phone: 503-823-7404

Customer Service: 503-823-7770

Website: www.portlandoregon.gov/water



**PORTLAND
PARKS & RECREATION**

Healthy Parks, Healthy Portland

PORTLAND PARKS & RECREATION

1120 SE 5th Avenue, Suite 1302

Portland, OR 97204-1926

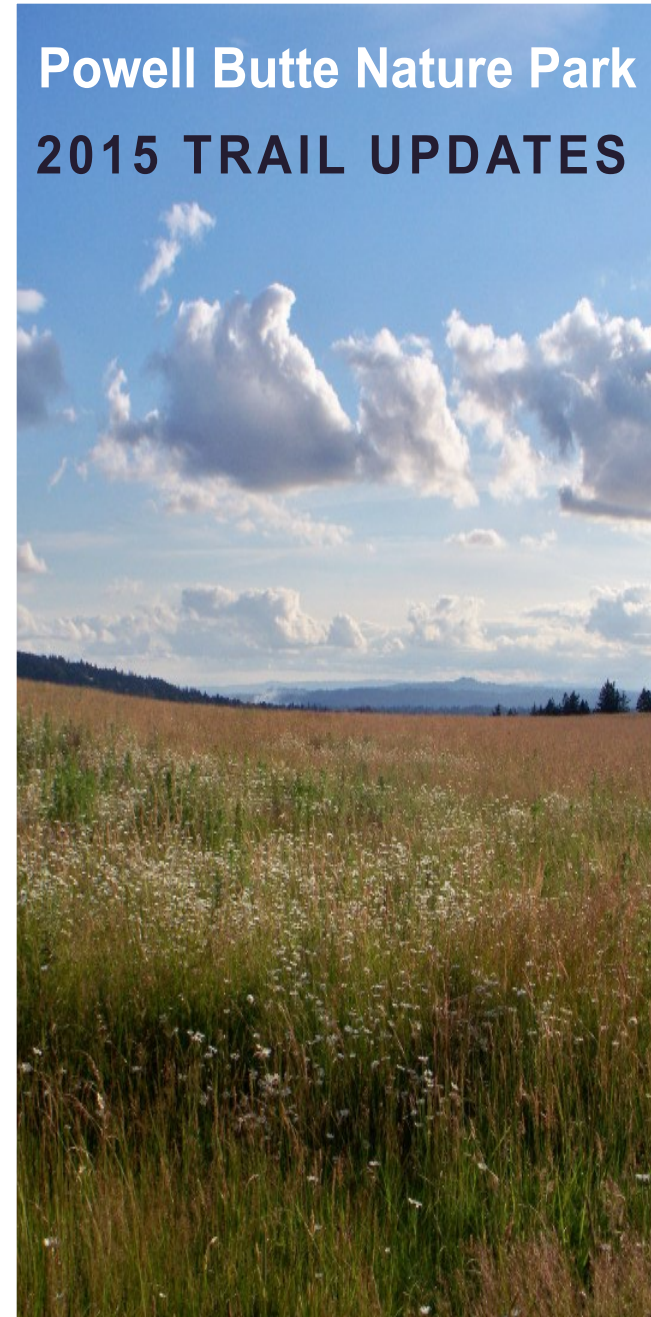
Phone: 503-823-PLAY (7529)

Website: www.portlandoregon.gov/parks



The City of Portland will make reasonable accommodation for people with disabilities. Please notify us no less than five (5) business days prior to the event by phone at 503-823-7404, by the city's TTY at 503-823-6868, or by the Oregon Relay Service at 1-800-735-2900.

Powell Butte Nature Park 2015 TRAIL UPDATES



**PORTLAND
PARKS & RECREATION**
Healthy Parks, Healthy Portland



Powell Butte Nature Park

POWELL BUTTE NATURE PARK, located at 16160 SE Powell Blvd., provides more than 611 acres and 10 miles of trails that offer hiking, biking, bird watching, and equestrian opportunities.

CONSTRUCTION

The Portland Water Bureau has completed construction on a second underground 50-million gallon reservoir and park facilities at the Nature Park.

The Water Bureau and Portland Parks & Recreation are committed to keeping the Nature Park and its uses open to the public and as normal as possible while work is being completed.

Work at the site will continue through 2015 as crews finish access roads, fencing, landscaping, and trail mitigation.

TRAILS

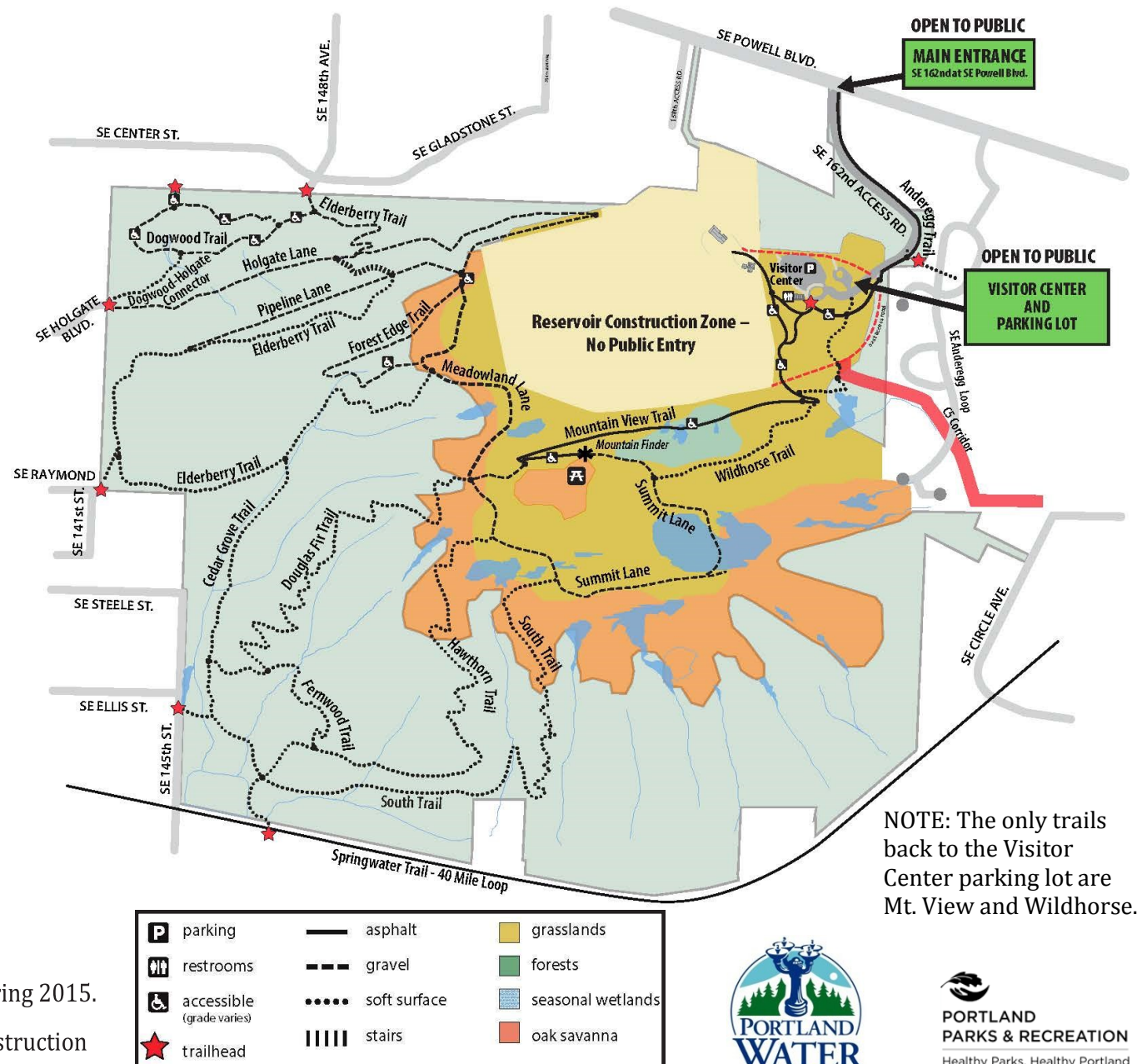
As part of the improvement projects at the Nature Park, the Water Bureau and Parks & Recreation partnered with park users to develop a new trail plan that included renaming several trails.

Trail names are included on the Trail Map shown to the right as well as on trail markers located throughout the Nature Park.

As completion work is conducted, trails in the park may be periodically detoured and temporarily closed for finishing improvements during 2015.

Park users are reminded to keep out of fenced construction areas and to stay on open designated park trails.

Powell Butte Nature Park Temporary Trail Map with New Trail Names



NOTE: The only trails back to the Visitor Center parking lot are Mt. View and Wildhorse.

